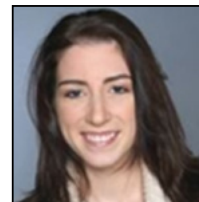


Tearing Down Labels: Leading the Way to Diminishing Unwanted Behaviors in Your Community

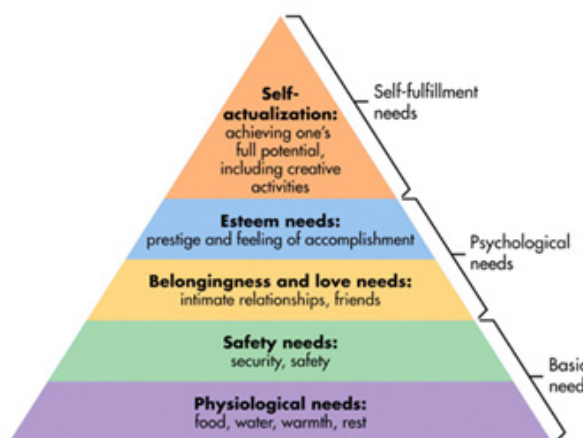
Caitlyn Stoffle

DePaul Senior Living, USA



Abstract

The speaker will focus on common behavioral expressions and how to overcome them as well as translate them as a form of communication for those living with cognitive diseases. The presentation will focus on various approaches, ways to communicate with someone living with a cognitive disease and how to support the individual in a conversation without escalating or creating unwanted behaviors. The presentation will teach strategies on how to manage behaviors, tear down stigmas and empower those caring for individuals with cognitive diseases as well as make them leaders in the dementia care world. Lastly, the presentation will utilize Maslow's Hierarchy of Needs to further understand how to overcome behaviors.



Biography

Caitlyn Stoffle, MA, CDP is the Administrator for Westwood Commons, a DePaul Community located in North Chili, NY. She has over a decade of health care experience. Caitlyn received her Undergraduate degree in Gerontology, with a specialization in Health Care Informatics. She received her Master's degree in Health Care Administration. She is a Certified Dementia Practitioner (CDP), a dementia expert in the industry. She has assisted with the initiative to create a dementia-friendly Massachusetts by training Boston City Hall employees, creating a dementia-friendly experience at the Boston Museum of Science, and training all third year medical students at Boston University. She is a noted speaker and presented at the 2019 Map through the Maze Alzheimer's Association conference for the Northeast Chapter. She is helping to change the culture of dementia care and strives to enhance community awareness and increase dementia care skills for those living or working with someone who has a cognitive disease.

Pubication

1. Ellison, J. (2018, October 3). Medical Conditions that Can Mimic Dementia. Retrieved from <https://www.brightfocus.org/alzheimers/article/medical-conditions-can-mimic-dementia>
2. Godfrey M, Young J, Shannon R, et al. The Person, Interactions and Environment Programme to improve care of people with dementia in hospital: a multisite study. Southampton (UK): NIHR Journals Library; 2018 Jun. (Health Services and Delivery Research, No. 6.23.) Chapter 4, Person-centred care: meaning and practice. Available from: <https://www.ncbi.nlm.nih.gov/books/NBK508103/>
3. Hamdy, R. (1998). Alzheimer's Disease: a Handbook for Caregivers.

[11th International Conference on Dementia and Dementia Care](#) | Paris, France | February 19-20, 2020

Citation: Caitlyn Stoffle, Tearing Down Labels: Leading the Way to Diminishing Unwanted Behaviors in Your Community, Paris, 19-20 February 2020, pp. 19